

eigenlabs

EigenD System Release Notes

Eigenlabs Ltd.
+44 (0) 1392 823000
support@eigenlabs.com

Release: **1.2.14-stable**
Release Category: Stable
Date: 13th January 2011

Download location: <http://www.eigenlabs.com/downloads/releases>

Contents:

1. Introduction.
2. Bugs fixed in this release
3. Bugs and known issues
4. Changes and Improvements

Release Chronology:

- Release 1.2.11 25th November 2010
- Release 1.2.12 3rd December 2010
- Release 1.2.13 8th December 2010
- Release 1.2.14 13th January 2011

1 – Introduction

The 1.2 branch is the first branch with windows support.

Release 1.2.3 was the first release which used a unified Mac and Windows code base.

The Windows install has been broken down into various parts as of release 1.2.3. If you have an earlier release installed, please use the control panel to un install all existing Eigenlabs packages (EigenD and the Device Driver package) before installing the new EigenD package. This only applies if you have installed Release 1.2.2 or earlier on windows.

There is now a separate installer which contains just the media, runtime system, and Alchemy. If installing for the first time, you need this installer and an EigenD package. Subsequent installs require only the EigenD package.

The 1.2 branch is now marked as stable. This means that we'll be bug fixing only from this point.

Please note that in this release, to communicate MIDI between EigenD and other applications such as Ableton, you need a virtual MIDI driver, such as LoopBE. When using LoopBE, you may find that the large data rates generated by EigenD cause LoopBE to assume that there is a MIDI feedback loop, and turn off the MIDI port. Unfortunately, LoopBE 1 does not allow you to turn off this mechanism. The more advanced version, LoopBE 30, does let you turn off loop detection.

2 – Bugs fixed in this release

The 1.2 branch contains all bug fixes from 1.1.24 onwards.

- Release 1.2.14:
 - Fix a problem with MIDI timestamps which caused problems with Ableton Live.
 - Fix the audio recorder on Windows.
- Release 1.2.13:
 - Fix a problem with Kmapper which was not honouring the channelisation of strip controllers.
 - Make the relative strip controller return to 0 when used for MIDI cc's.
- Release 1.2.12:
 - Fix a bug where a setup may become corrupted after moving from one setup to another. This corruption cause the new setup to take a very long time to load, even from a similar setup. This release will fix the corruption in saved setups.
- Release 1.2.11:
 - Compensate for the different path name of a VST in 32 vs 64 bit Windows.

- Release 1.2.10:
 - Minor bug fixes.
- Release 1.2.8:
 - Minor bug fixes.
- Release 1.2.7:
 - Fix incremental loading issue with AU's.
 - Fix problems with odd audio buffer sizes, which are especially prevalent on Windows.
 - Plays more AIF files.
- Release 1.2.6:
 - Various Stability Fixes
 - Fixed problem where AU parameters were drifting on being manipulated in the Routing Matrix.
- Release 1.2.5:
 - Various Stability fixes.
 - Fixed bug where the current Audio device was not saved.
 - Stop MIDI input from auto connecting by default to the first device it finds.
- Release 1.2.3:
 - Better support for the various Windows Audio mechanisms. Individual devices can now be selected in the Audio Port browser.
 - Fixed glitching in the Sampler.
 - Fixed glitching in the Cello.
 - Fixed redrawing issues in the Browser.

3 – Bugs and known issues in this release

- Alpha and Tau are not supported under Windows.
- Windows Vista is not supported yet.
- Some non looping AIF's will still not play.
- Occasional crash reported under Windows while playing recordings.
- When kgroup outputs are removed, they may leave extraneous setup which causes subsequent creation of further outputs to fail.

1.2.8 includes an upgrade which will remove this 'cruft' from current setups, but further output removals will still exhibit the problem.

4 – Changes and Improvements

- Release 1.2.9:
 - Improved the Plugin Scanner.

You can now change the search paths for VST type plugins.

At the end of the scan, the current lists for both good and bad plugins are displayed.

- Release 1.2.6:
 - Added the ability to run Scripts from Belcanto.

If you add a name clause to a script, using Belcanto words:

```
name
  kgroup 1 script
```

Then you may run that script from Belcanto using:

```
interpreter hey kgroup 1 script execute
```

- Improved the Installer.
- Release 1.2.5:
 - Added a new Audio Settings Panel which can be found under the 'Window' Menu. This menu allows you to select the device, and adjust sample rate and buffer size parameters. It also allows you to access any device specific control panel (ASIO only)
 - Added a MIDI 'None' device to the MIDI input and output agents. This allows stop MIDI transmission or reception, and is also the default device. Note that EigenD will (on a Mac) always output to the virtual EigenD device.
 - On a Mac, don't hide the virtual MIDI inputs and outputs created automatically. These are named 'Eigenlabs N' where N is a number.
- Release 1.2.4:
 - The Windows Install now includes Camel Audio's Alchemy.
 - Improvements to Audio Unit hosting, various effects like the standard Apple

ones, including AUNetSend, are now supported.

- Added support for overdub mode in the EigenD recorders.

An additional 'overdub' toggle key is now present on the Alpha and Tau setups on the Recorder Controls, underneath the 'cancel all' key. Due to space restrictions, in the Pico setup this key is located at the bottom of the left row in the Midi Out Control.

When the 'overdub' toggle is enabled and lit green, additional recordings for the same instrument will not replace the previous ones but instead create additional takes that play simultaneously. Additionally, the 'unplay' key erases only the last take, allowing for layered loops to be built up and tore down with a single instrument while playing live.

The Belcanto commands to globally toggle the overdub behaviour are:

```
all recorder hey all overdub toggle set
```

An individual recorder's overdub state can be toggled also:

```
recorder 1 hey overdub toggle set
```

Note that if one recorder's overdub state is not consistent with the overdub state of the other recorders, the light of the overdub key will be lit orange.

- Added support for clearing all events in the EigenD arrangers.

The arrangers can now clear their event with a single Belcanto 'clear' command, for example:

```
arranger 1 hey clear
```

The Alpha arrangers have an extra key added above the on/off key that allows all the events to be cleared from the keyboard. This clear key requires a double tap before it executes the command to prevent accidental clearing of the events. During the double tap delay, the light of the arranger clear key will turn red. If the second tap comes too later, it's considered as a first tap again.

The double tap delay is configurable through Belcanto as such:

```
all arranger hey all doubletap to 1.5 set
```

The above sets the double tap delay to 1.5 seconds for all arrangers.

- Added support for a blinking light on the metronome key.

The light of the metronome key can now optionally blink in sync with the

tempo. The first beat is indicated by a green flash and the other by a red one. By default the blinking is disabled and it can be activated through the 'Flash On' script in the 'Metronome' folder.

Alternatively this can also be done through Belcanto, the flash time is indicated in milliseconds and setting it to 0 turns the flashing off:

```
metronome hey beat flash persistence to 100 set
```

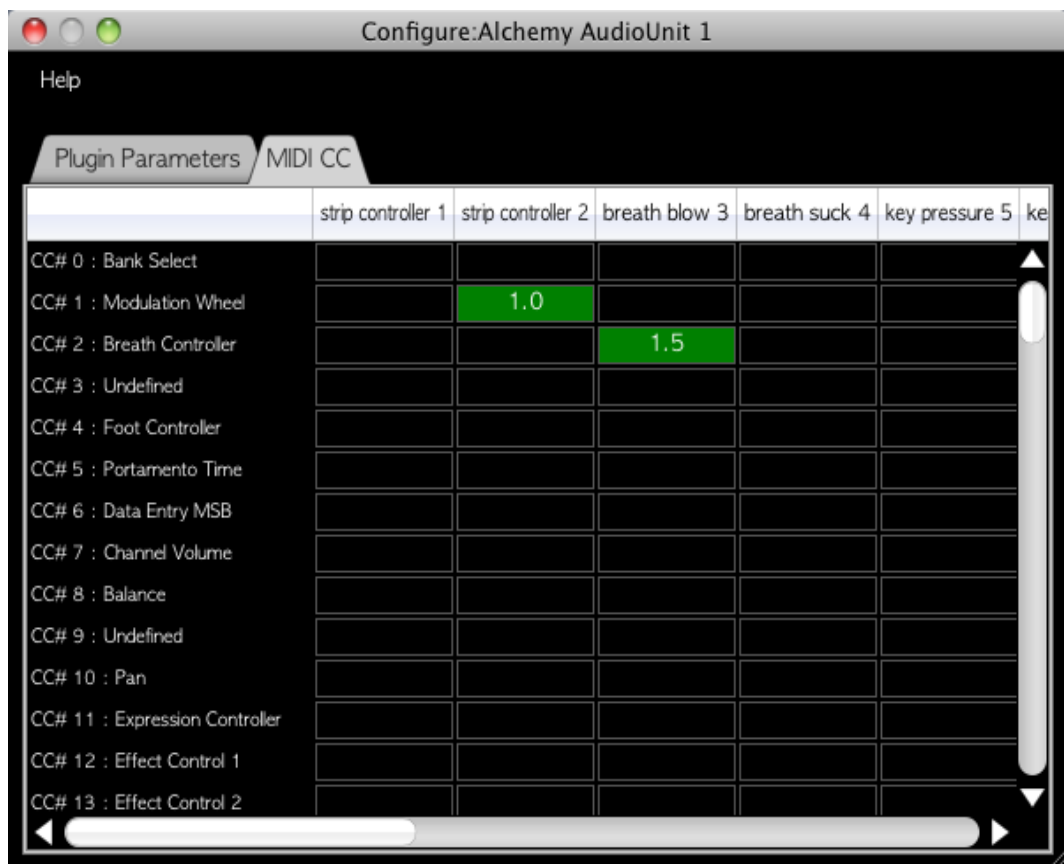
- The blink time of keygroups is now configurable and can be turned off.

The time during which the blink is seen can be set in seconds and setting it to 0 turns the blinking off, for example:

```
kgroup 1 hey blink to 0 set  
all kgroup hey blink to 0.1 set
```

There are scripts in the 'K Group' folder to change the blink time.

- The Audio Unit parameter routing window now has a second panel to map EigenD controllers to MIDI CC messages. The usage is the same as for the Audio Unit parameter routing, you click on a box to link a controller to a CC message and adjust the scale by dragging up and down.



- Scale and tonic changes are now happening instantly instead of as soon as possible, note that the light indication of the active scale and tonic can still

happen at a later time.